

MICROSOFT FABRIC FROM PILOT TO PRODUCTION

How data leaders avoid governance chaos, cost shock, and rework in the first 90 days

Built for:

CFOs • CIOs • Heads of Data • IT Ops • Analytics Leaders

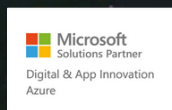
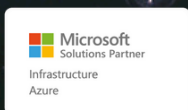


**ONYX
DATA**

YOUR STRATEGIC

MICROSOFT FABRIC & AI PARTNER

Unlock the real-time, governed potential of your Microsoft data estate with Onyx Data. We provide results-driven Fabric and AI strategy and execution, from pilot to production, ensuring Data-Driven Success and Safe Consumption.



Most Fabric issues don't show up at the start.

In the early weeks, everything feels fine.

- *Teams are experimenting*
- *Access is opened "temporarily"*
- *Workspaces multiply to keep momentum*
- *Costs look small enough not to worry about*

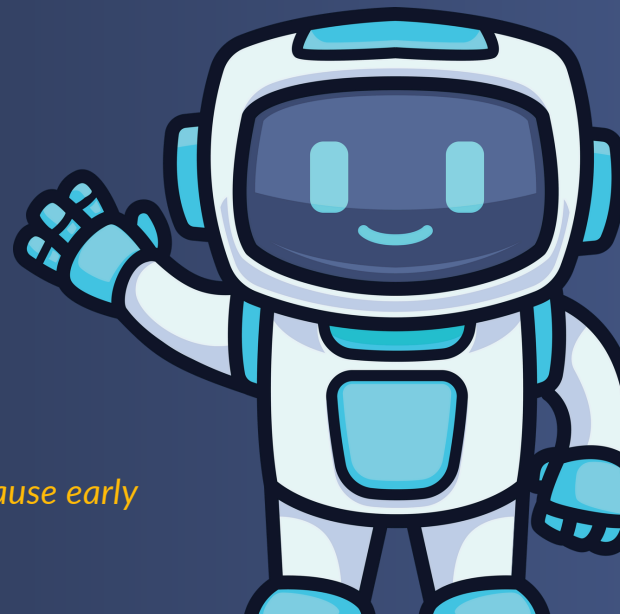
And that's normal.

*The problem isn't speed.
The problem is what doesn't get decided while everyone is moving fast.*

By the time Fabric becomes business-critical, those early shortcuts quietly turn into structural issues.



"No one breaks Fabric on purpose. It breaks because early decisions were never revisited."



Fabric doesn't fail all at once. It fails in stages.

At some point, someone asks a simple question:

*"Who actually owns this workspace?"
And there's no clear answer.*

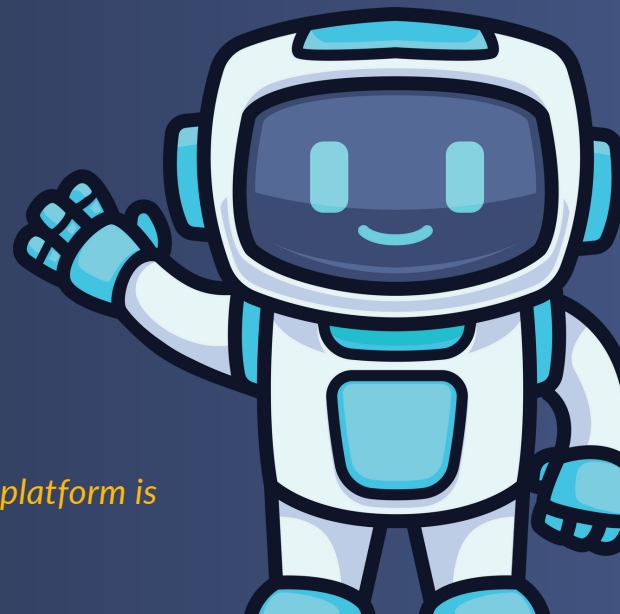
*Domains blur. Responsibilities overlap.
Decisions slow down because accountability isn't clear.*

Usage grows, but no one can clearly explain:

- *What's driving capacity consumption*
- *Which workloads matter most*
- *What's safe to pause or optimise*

Costs start rising, but not predictably.

*This is when security, finance, or risk teams step in.
Not because Fabric is unsafe but because no one can prove
that it is safe.*



The first 90 days don't feel important. That's why they are.

Early Fabric decisions tend to feel reversible.

- *"We'll restructure later."*
- *"We'll tighten access once it's stable."*
- *"Costs are small right now."*
-

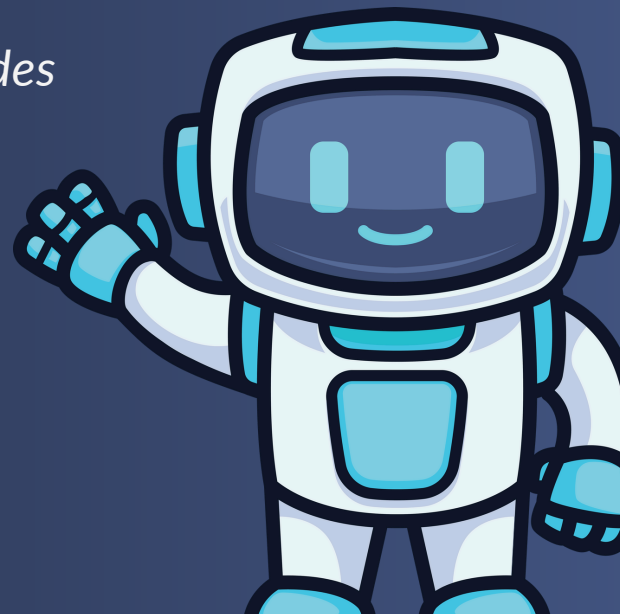
*But in practice, these early patterns become habits.
Teams build on top of them.
Processes form around them.
People resist changing what already "works."*

When governance is delayed:

- *Cleanup becomes disruptive*
- *Refactoring takes months*
- *Costs and risk rise together*

When governance is designed early:

- *Scaling feels controlled*
- *Optimisation is incremental*
- *Platform trust grows instead of erodes*



Production isn't a size. It's a state.

Many teams assume production readiness means:

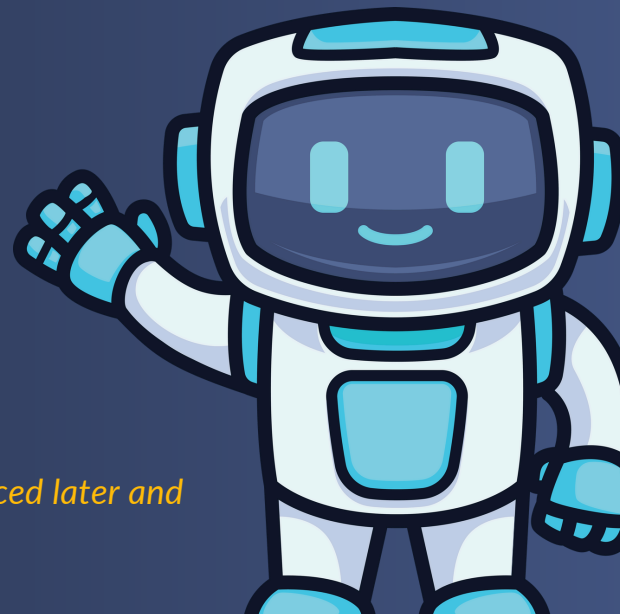
- *More users*
- *More data*
- *Bigger dashboards*

In reality, production readiness means:

- *Clear ownership when something breaks*
- *Confidence in who can access what*
- *Visibility into usage and cost*
- *Auditability without panic*

What strong Fabric environments usually have in common

- *Domains aligned to the business*
- *Explicit workspace ownership*
- *Access that's intentional, not inherited*
- *Cost signals before invoices arrive*
- *A clear path from pilot scale*



These are common. They're also avoidable.

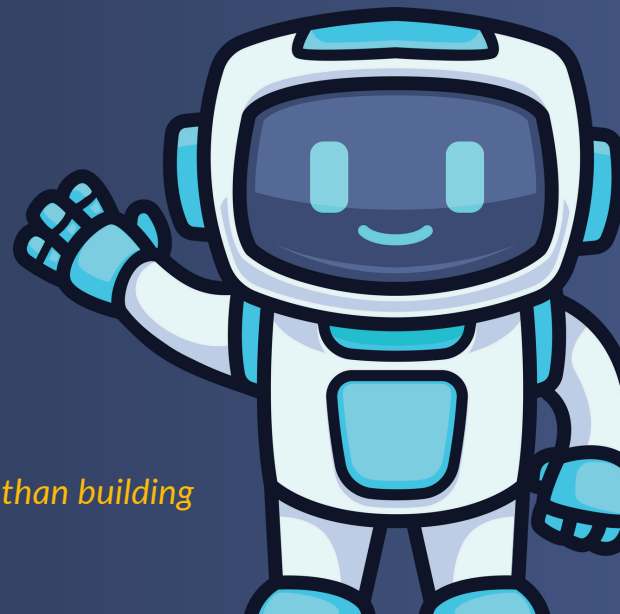
- *Treating default settings as strategy*
- *Assuming governance can be added without disruption*
- *Waiting for finance or security to raise concerns*
- *Confusing speed with maturity*

None of these mean a team has failed.

They usually mean governance was postponed not ignored.



Because fixing these later often costs more time than building correctly from the start.



If you're scaling Fabric, clarity beats speed

If your organisation is moving from pilot to broader adoption, the goal isn't to stop progress it's to make sure progress is sustainable.

Book Your FREE Fabric Cost Control Review

[BOOK HERE](#)

**YOUR STRATEGIC
MICROSOFT FABRIC & AI PARTNER**

Unlock the real-time, governed potential of your Microsoft data estate with Onyx Data. We provide results-driven Fabric and AI strategy and execution, from pilot to production, ensuring Data-Driven Success and Safe Consumption.

